



SCIENCE OF CERTAINTY

We aim at giving back more than we take

# Virksomhedernes rolle i biodiversitetskrisen

Margit Bloch Avlund

Head of CSR/ESG i Gubra

Natur- og Miljøkonferencen 2024, Natursporet



### **Om Gubra**

- BioTech og kontraktforskning – udvikling af ny medicin
- Etableret i 2008, børsnoteret 2023
- HQ i Hørsholm
- 220+ medarbejdere
- 200+ kunder på verdensplan





Gubra was founded out of a profound passion for science, coupled with a strong desire to make a meaningful difference in the world.

Jacob Jelsing, Chairman of the board (co-founder) and Niels Vrang, Chief Science Officer (co-founder)

## Our vision

- To become leaders in the fight for a more sustainable and healthier world.



## Our mission

- To facilitate the discovery of new medicines.
- To act on and inspire others in the fight against the climate and biodiversity crisis.





## Key Sustainability Guidelines

**1**

**Investing 10% of  
our pre-tax profit**

Commitment to invest 10% of our pre-tax profit in environmental activities every year through our subsidiary Gubra Green.

**2**

**Carbon negative**

Carbon negativity implies absorbing more CO<sub>2</sub> than we are emitting. We do this by stimulating projects aiming at reducing our carbon emissions, planting trees, and when necessary, buying carbon offsets.

**3**

**Nature positive**

Our contribution to reversing the decline in biodiversity so that species and ecosystems begin to recover. We do this by e.g. reducing our supply chain impacts, and converting farmland into nature and forests.

**4**

**Inspire & engage**

Inspiring and engaging our stakeholders and other companies to fight for a more sustainable world.

**5**

**Order in  
our own house**

Providing a healthy and non-discriminatory work environment, insisting on proper waste management, and support and encourage our suppliers to live up to environmental and social standards.



10% af Gubra's profit før skat investeres i grønne projekter gennem Gubra Green

Gubra er det første danske børsnoterede selskab med et 10% commitment



## 10% GREEN COMMITMENT





# Gubra's skov- og naturprojekt på Langeland









# Gubra's skov- og biodiversitetsprojekt på Langeland

Omdannelse af konventionelt drevet landbrugsjord til en mosaik af lysåben natur og skov

Established **50** hectares of open areas with meadows, bogs, and open grassland

Established **83** hectares of new forest planted in 2021 (**48** hectares) and 2022 (**35** hectares)

Planted **367.000** trees and shrubs

Established **4** hectares of new bird thickets and groves

Established **9** new waterholes in 2021 and 2022

Established **700** meters of new hedgerows

Established **400** meters of new insect embankments

Blocked **6** internal drains to restore a more natural hydrology

**2** large wagon loads of logs and **10** wagon loads of boulders were spread out to create variation

Initiated year-round grazing by **18** Galloway cows on approx. **20** hectares



# Before



The cultivated fields are calling for nature restoration.

# After



The new waterholes are thriving, and the surrounding new forests, meadows and grassland are on their way.



Newly established waterhole 2021.



Already in 2022 Northern crested newt was discovered in several waterholes.





- Arable field
- Clover field/lucerne
- Afforestation or fallow
- Existing nature
- Natural ecosystems

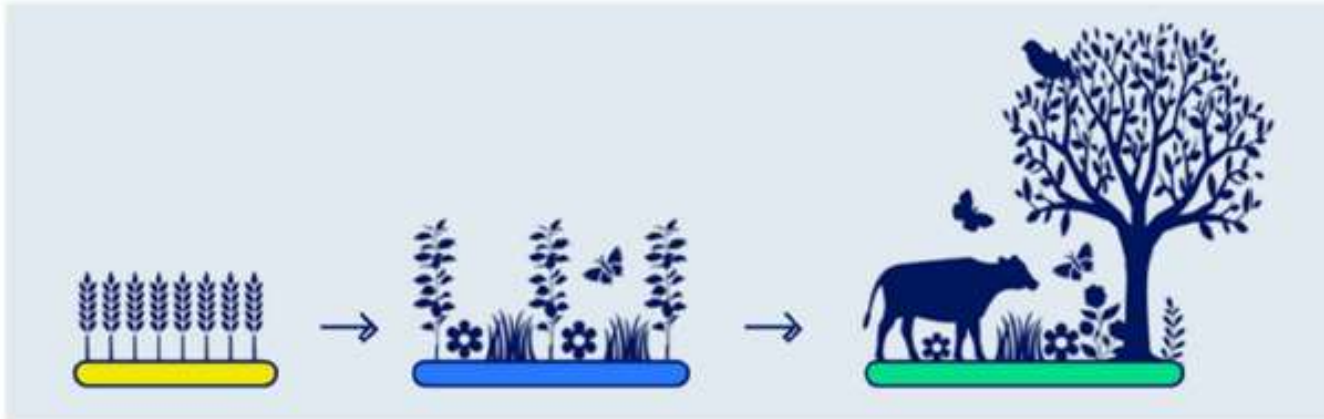
2020



2023



FUTURE







WE JOIN FORCES

# Sustainability in action

Together and over time, we can make a difference,  
one action at a time.

## Langeland video

<https://www.gubra.dk/about-us/sustainability/sustainability-in-action/>

EARTH IS CALLING



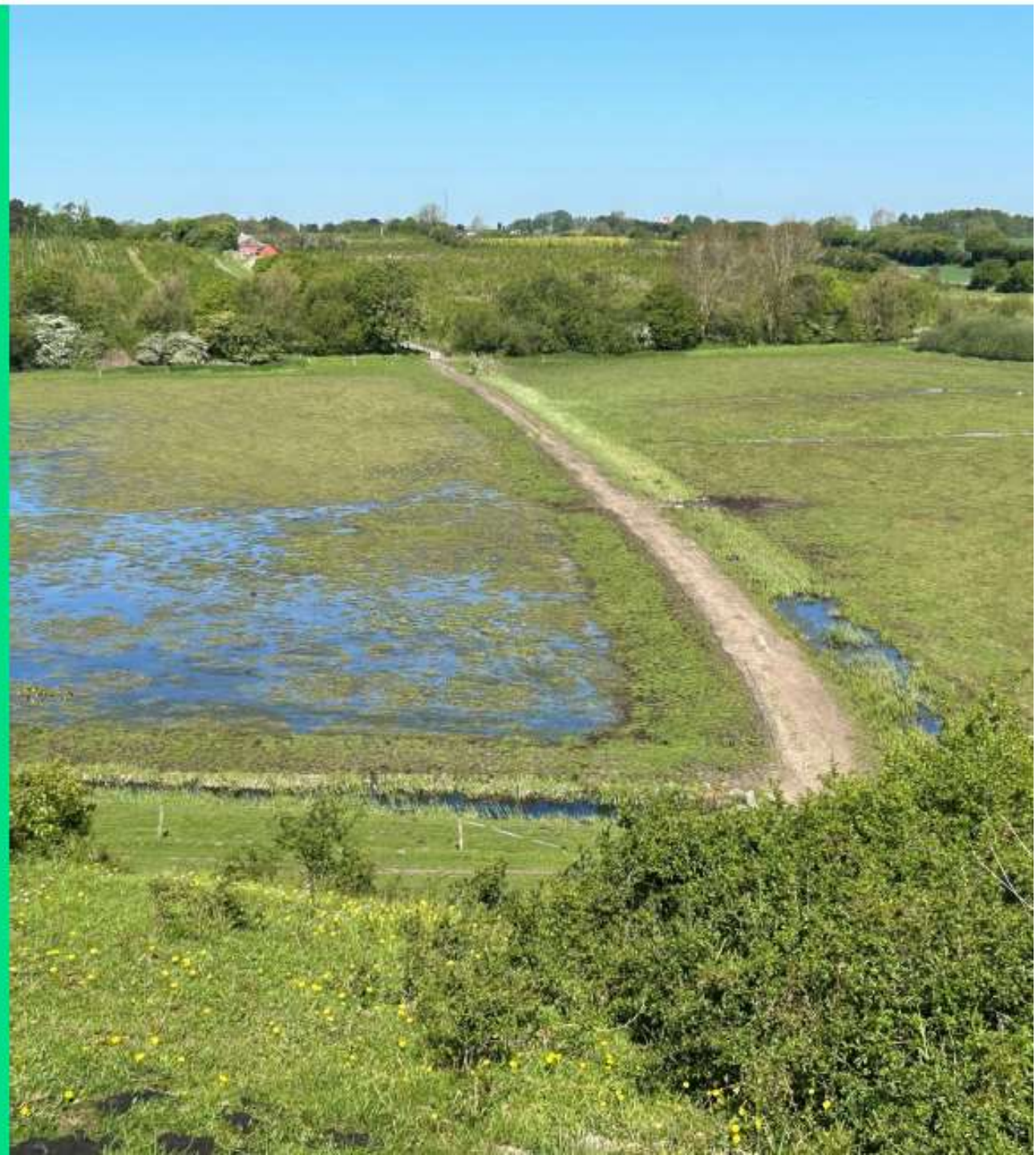


# Gubra som naturgenopretter

En rolle vi tager seriøst

Det giver mening for:

- + Klimaet, hvor Gubra's skov allerede har optaget 205 tons CO<sub>2</sub>e mellem 2020-2023 (94% løvtræer)
- + Naturen, hvor bl.a. helårsgræsning og nye vandhuller tiltrækker mange insekter og et rigere fugleliv
- + Medarbejderne, som kommer tættere på naturen og oplever den forskel det gør at give naturen mere plads
- + Investorerne, som ser, at deres investering gør en klima- og naturrelateret forskel
- + Samarbejdspartnere og kunder, som kan blive inspireret til også at handle for naturen og klimaet.







## ESG-rapportering - nu også på biodiversitet

- + **Vi får ikke bedre biodiversitet af at lave flotte ESG-rapporter**
- + *2019 da vi gik i gang kontra idag: krav til dokumentation. Brug som springbræt.*
- + *Negativt og positivt aftryk: Universel metode? Vent ikke, every step matters.*
- + *Naturen er ligeglad med årsagen til handling, bare vi handler. Det skal ikke være perfekt, søg viden.*
- + *Der er brug for flere samarbejder og forretningsmodeller der batter.*
- + *Kanaliser pengene hen hvor de får effekt for naturen.*
- + *Behov for en anden bundlinjeforståelse og at få <sup>14</sup> det naturpositive ind i strategien.*



Tak for opmærksomheden

Margit Bloch Avlund  
Gubra A/S  
Hørsholm Kongevej 11B  
2970 Hørsholm

Phone: +45 3152 2650

[www.gubra.dk](http://www.gubra.dk) 

[mbl@gubra.dk](mailto:mbl@gubra.dk)

**Let's stay connected**



Gubra's arealer på Langeland